

OEE Studio Release Note

Version 3.1

Deb-Tech Systems, Inc. & Production Improvement Systems Ltd.

Debbie.Olk@DebTechSystems.com

Russell@ProductionImprovement.com

847.854.3148

What's New in 3.1

- **NEW - OEE Trend Reports** display trend reports comparing Shifts, Lines or Parts – includes options for OEE, Availability, Performance or Quality.
- **NEW - Line Reports Menu** – preformatted Line OEE report combining all shifts into a single page report for each line.
- **NEW - Average Duration line graph** – included in Time & Frequency Loss report.
- **NEW – Recent Screen selector** – remembers where you went so you can get back there easily.
- **NEW – Reason Count** – added to Availability – Tabular Analysis. Very helpful when creating a Paynter Chart.
- **Updated Charting Options** – For the ad-hoc reporting screens – Job Data, Shift Data, Loss Events by Shift and Job. Select your own chart type.
- **Updated Menu structure for Pivot Grid Options**
- **Updated Define Custom Fields selection** – added on screen instruction as to where data elements can be placed.
- **NEW – Define Custom Fields – Custom Date Interval** – added the ability to report on date hierarchy, such as Year, Quarter, Month.
- **Links to online help** - We are starting to incorporate online help starting with a link to the Pivot Grid Help Page.
- **Efficiency added to Reports** – Efficiency value added to Shift OEE, Line OEE and Shift Production reports.
- **NEW Hide/Show Menu Option** – Makes it a bit easier to hide the side menu when you want to see the full screen.
- **Shift Data / Job Data** – hover over chart to display values of each bar.
- **Shift Data / Job Data** – Define how you want to use the custom User Strings and User Numbers.
- **Preset Dates** – added This Year and Last Year to the selection
- **User Theme saved** – for those of you that like to change the theme of the application, it is now saved when you exit.
- **Updated Website** – More online help - check it out!! www.oestudio.com
- Several defects fixed – thanks to all the Bug Hunters out there!

OEE Trend Reports

Consistent navigation for these reports.

The Trends menu is shown with the following items: OEE, OEE Trend, OEE Year To Date, OEE Shift (By Device), OEE Part (By Device), OEE Device, Availability, Time & Frequency Loss, Performance, and Quality. The 'OEE Shift (By Device)' item is circled in red.

The 'Include' options display either Shifts or Devices associated with the Hierarchy, Date Range and Production Filter selections.

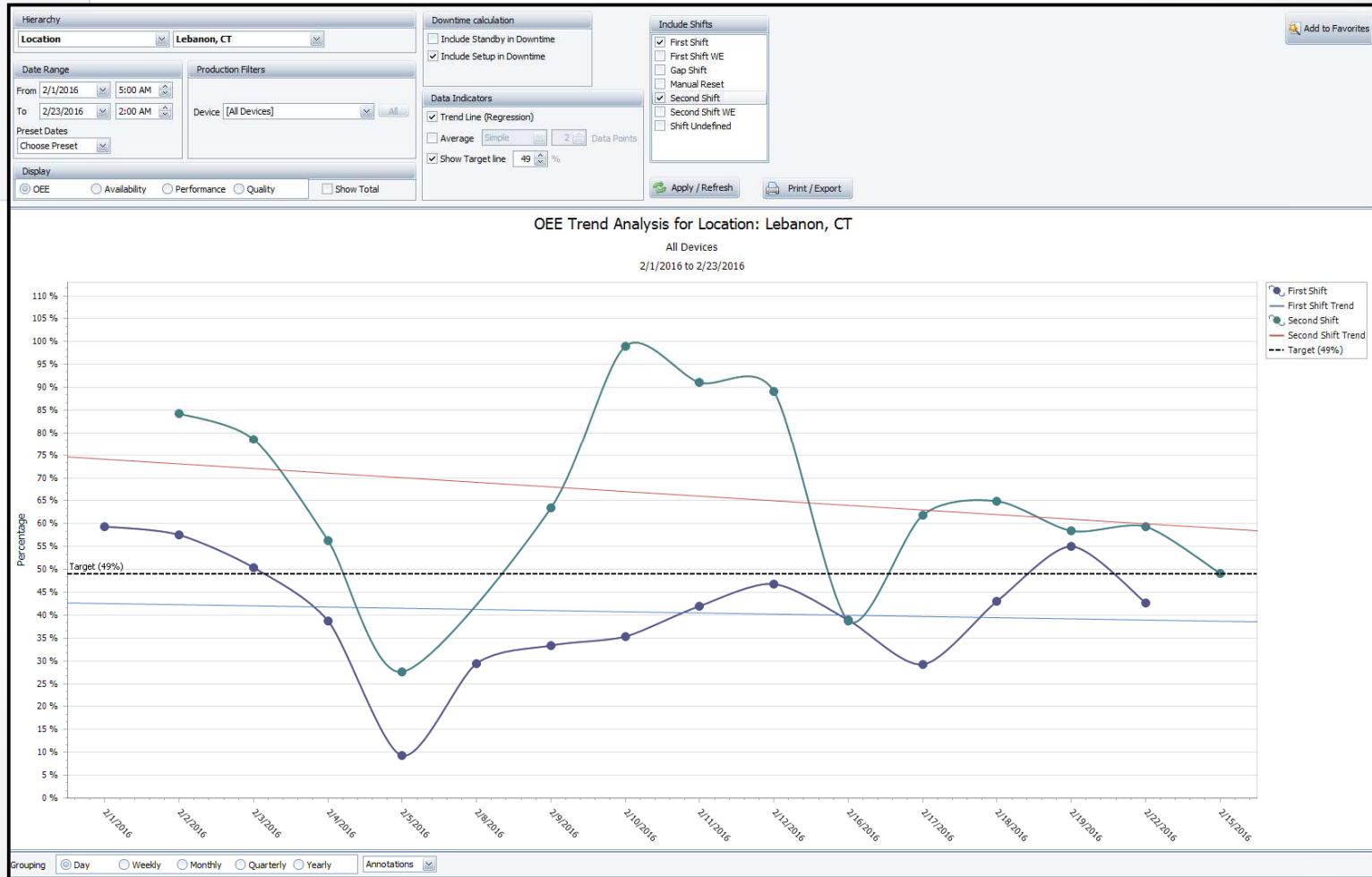
The main report interface is titled 'Shift OEE Trend (By Device)'. It features several filter panels: 'Hierarchy' (Location: Lebanon, CT), 'Date Range' (From: 2/1/2016 5:00 AM, To: 2/23/2016 2:00 AM), 'Production Filters' (Device: [All Devices]), 'Downtime calculation' (Include Standby in Downtime: unchecked, Include Setup in Downtime: checked), 'Data Indicators' (Trend Line (Regression): checked), and 'Include Shifts' (First Shift: checked, First Shift WE: unchecked, Gap Shift: unchecked, Manual Reset: unchecked, Second Shift: unchecked, Second Shift WE: unchecked, Shift Undefined: unchecked). A 'Production Filters' dialog box is open showing 'Part: 73359430' and 'Shift: [All Shifts]'. A 'Data Points' display shows '49 %'. To the right, there are two sub-reports: 'Part OEE Trend (By Device)' with an 'Include Devices' list (1004_VFL1: unchecked, 1004_VFL2: checked, 1004_VFL3: checked, 1004_VFL4: checked, 1004_VFL5: checked) and 'Device OEE Trend' with an 'Include Devices' list (1004_RSS1: unchecked, 1004_VFL1: checked, 1004_VFL2: unchecked, 1004_VFL3: unchecked, 1004_VFL4: unchecked, 1004_VFL5: unchecked). An arrow points from the text above to the 'Include Shifts' panel.

Trend – OEE Shift (by Device)

Comparing First Shift to Second Shift for All Lines

Trends

- OEE
 - OEE Trend
 - OEE Year To Date
 - OEE Shift (By Device)**
 - OEE Part (By Device)
 - OEE Device
- Availability
- Time & Frequency Loss
- Performance
- Quality



Actual data from Shift Analysis to verify.

Shift	Date	OEE ...
Second Shift		
	2/2/2016 1...	84.3
	2/3/2016 1...	78.5
	2/4/2016 1...	56.3
	2/5/2016 1...	27.6
	2/9/2016 1...	63.5
	2/10/2016 ...	99.0
	2/11/2016 ...	91.0
	2/12/2016 ...	89.2
	2/15/2016 ...	49.1
	2/16/2016 ...	38.8
	2/17/2016 ...	61.9
	2/18/2016 ...	65.0
	2/19/2016 ...	58.4
	2/22/2016 ...	59.3
Second Shift Total		
		63.9
First Shift		
	2/1/2016 1...	59.4
	2/2/2016 1...	57.5
	2/3/2016 1...	50.4
	2/4/2016 1...	38.7
	2/5/2016 1...	9.2
	2/8/2016 1...	29.3
	2/9/2016 1...	33.4
	2/10/2016 ...	35.4
	2/11/2016 ...	42.0
	2/12/2016 ...	46.9
	2/16/2016 ...	38.9
	2/17/2016 ...	29.2
	2/18/2016 ...	43.0
	2/19/2016 ...	55.0
	2/22/2016 ...	42.7
First Shift Total		
		42.0

Trend – OEE Part (by Device)

Comparing part 73359430 on all production lines

Trends

- OEE
- OEE Trend
- OEE Year To Date
- OEE Shift (By Device)
- OEE Part (By Device)**
- OEE Device

Availability

Time & Frequency

Performance

Quality

Part OEE Trend (By Device)

Hide Main Menu

Hierarchy: Location: **Lebanon, CT**

Date Range: From: 2/1/2016 5:00 AM To: 2/23/2016 2:00 AM

Production Filters: Part: 73359430

Downtime calculation:

- Include Standby in Downtime
- Include Setup in Downtime

Include Devices:

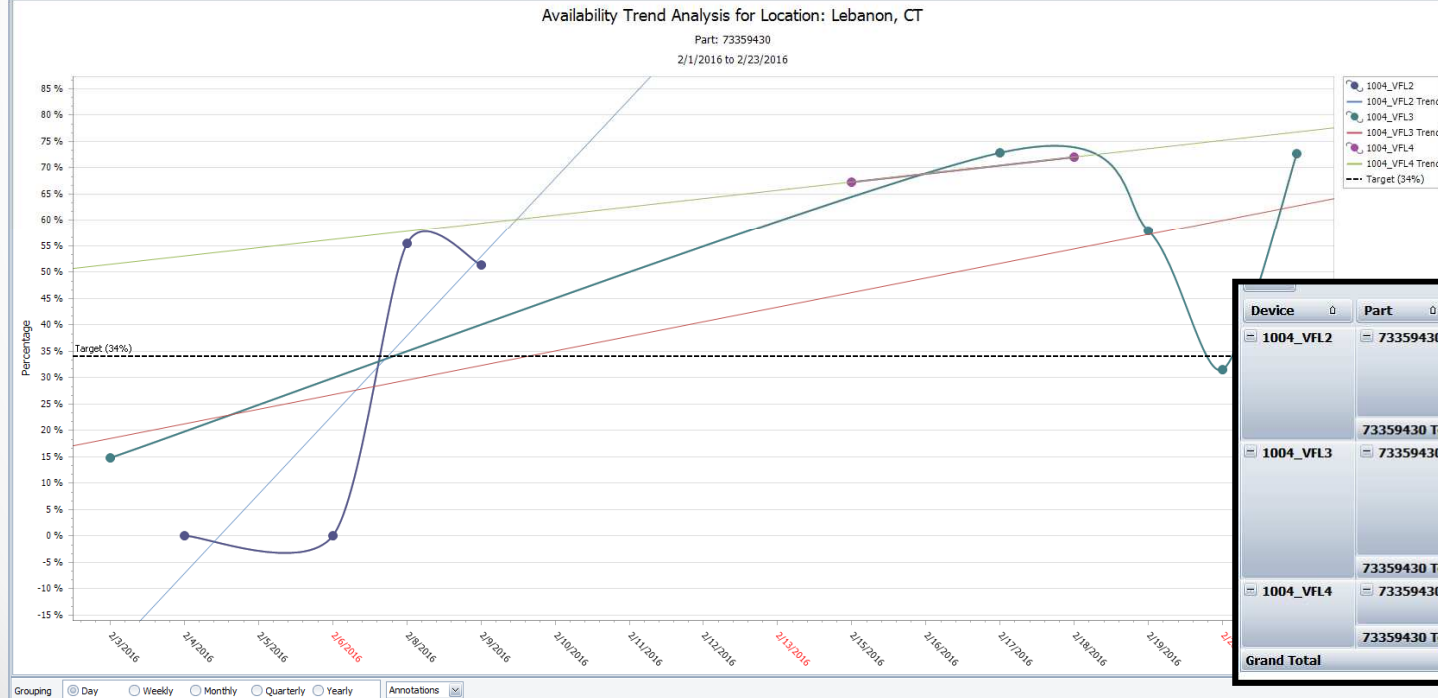
- 1004_VFL1
- 1004_VFL2
- 1004_VFL3
- 1004_VFL4
- 1004_VFL5

Data Indicators:

- Trend Line (Regression)
- Average: Simple
- Show Target line: 34%

Display: OEE Availability Performance Quality Show Total

Buttons: Apply / Refresh, Print / Export, Add to Favorites



Device	Part	Date	OEE Total
1004_VFL2	73359430	2/4/2016 1...	0.0
		2/6/2016 1...	0.0
		2/8/2016 1...	25.0
		2/9/2016 1...	32.4
73359430 Total			13.8
1004_VFL3	73359430	2/3/2016 1...	5.6
		2/17/2016 ...	44.4
		2/19/2016 ...	35.1
		2/20/2016 ...	22.1
		2/22/2016 ...	49.0
73359430 Total			31.1
1004_VFL4	73359430	2/15/2016 ...	27.4
		2/18/2016 ...	46.8
73359430 Total			39.9
Grand Total			28.2

Trend – OEE Device

Comparing Lines 1, 2 & 3 – all shifts

Trends

- OEE
 - OEE Trend
 - OEE Year To Date
 - OEE Shift (By Device)
 - OEE Part (By Device)
 - OEE Device**
- Availability
- Time & Frequency L
- Performance
- Quality

Device OEE Trend

Hide Main Menu

Location: Lebanon, CT

Date Range: From 2/1/2016 5:00 AM To 2/23/2016 2:00 AM

Production Filters: Shift [All Shifts]

Downtime calculation:

- Include Standby in Downtime
- Include Setup in Downtime

Include Devices:

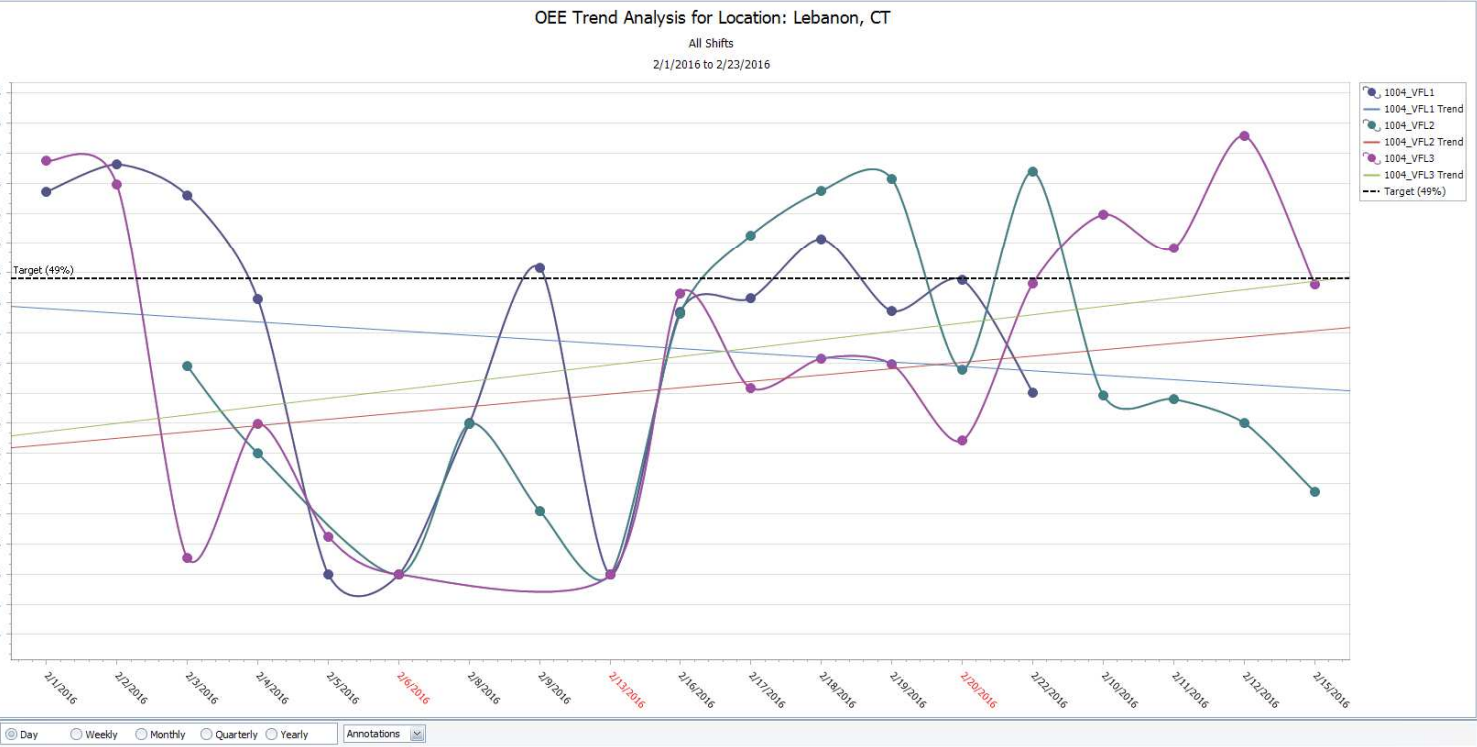
- 1004_RSS1
- 1004_VFL1
- 1004_VFL2
- 1004_VFL3
- 1004_VFL4
- 1004_VFL5

Data Indicators:

- Trend Line (Regression)
- Average
- Show Target line 49%

Apply / Refresh Print / Export

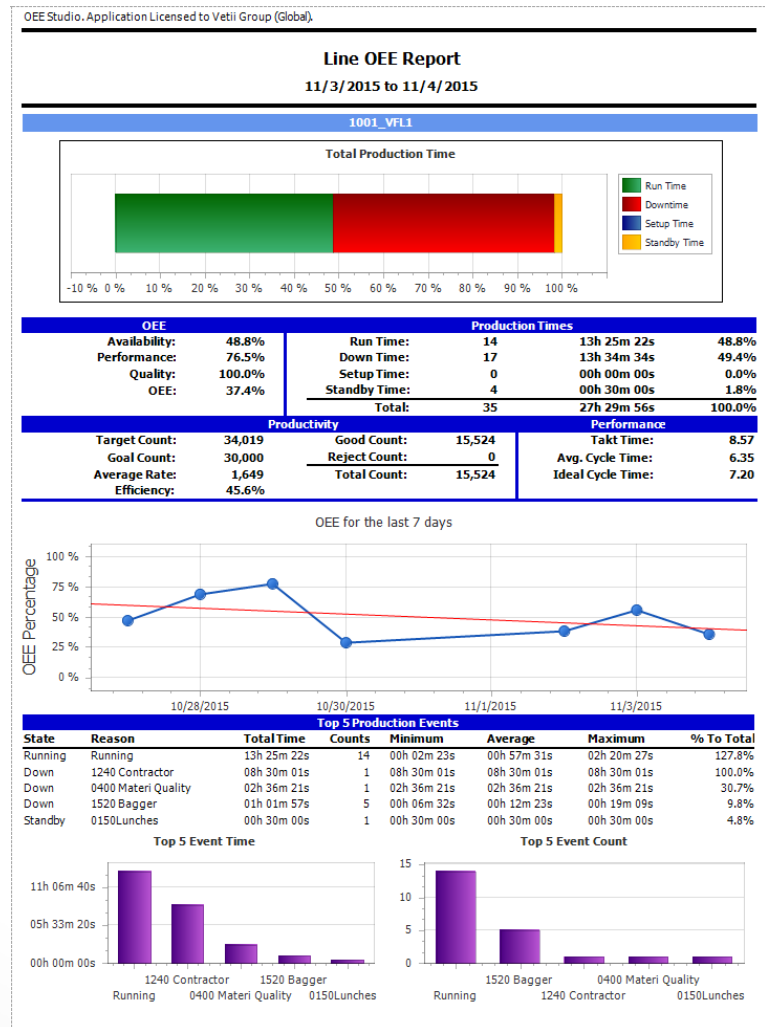
Device	Date	OEE %
1004_VFL1	2/1/2016 1...	63.5
1004_VFL1	2/2/2016 1...	68.1
1004_VFL1	2/3/2016 1...	63.0
1004_VFL1	2/4/2016 1...	46.2
1004_VFL1	2/5/2016 1...	0.0
1004_VFL1	2/8/2016 1...	25.1
1004_VFL1	2/9/2016 1...	50.8
1004_VFL1	2/16/2016 ...	43.4
1004_VFL1	2/17/2016 ...	45.7
1004_VFL1	2/18/2016 ...	55.7
1004_VFL1	2/19/2016 ...	45.0
1004_VFL1	2/22/2016 ...	30.2
1004_VFL1 Total	2/3/2016 1...	46.2
1004_VFL2	2/3/2016 1...	34.5
1004_VFL2	2/4/2016 1...	20.0
1004_VFL2	2/8/2016 1...	25.0
1004_VFL2	2/9/2016 1...	18.4
1004_VFL2	2/10/2016 ...	26.3
1004_VFL2	2/11/2016 ...	28.5
1004_VFL2	2/12/2016 ...	54.0
1004_VFL2	2/16/2016 ...	42.0
1004_VFL2	2/17/2016 ...	49.8
1004_VFL2	2/18/2016 ...	59.6
1004_VFL2	2/19/2016 ...	51.3
1004_VFL2	2/22/2016 ...	66.9
1004_VFL2 Total	2/3/2016 1...	41.9
1004_VFL3	2/1/2016 1...	68.7
1004_VFL3	2/2/2016 1...	64.9
1004_VFL3	2/4/2016 1...	24.9
1004_VFL3	2/5/2016 1...	6.1
1004_VFL3	2/10/2016 ...	67.1



Reports – Line Reports – Line OEE



Summary report – one page for each line combining all shifts



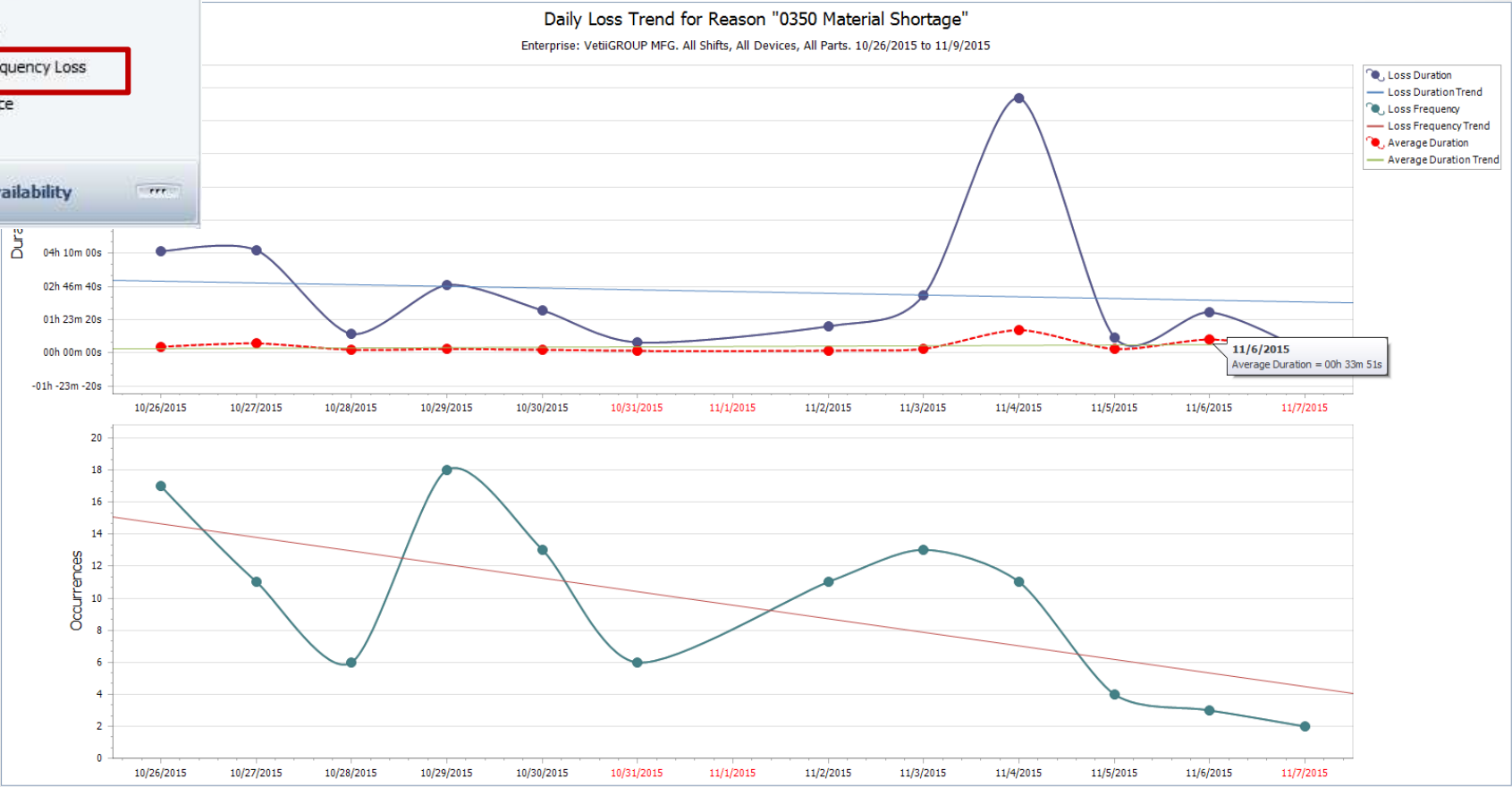
Average Duration – Time & Frequency Loss Chart

Displays the **Average Duration** trend line – per loss reason

Trends

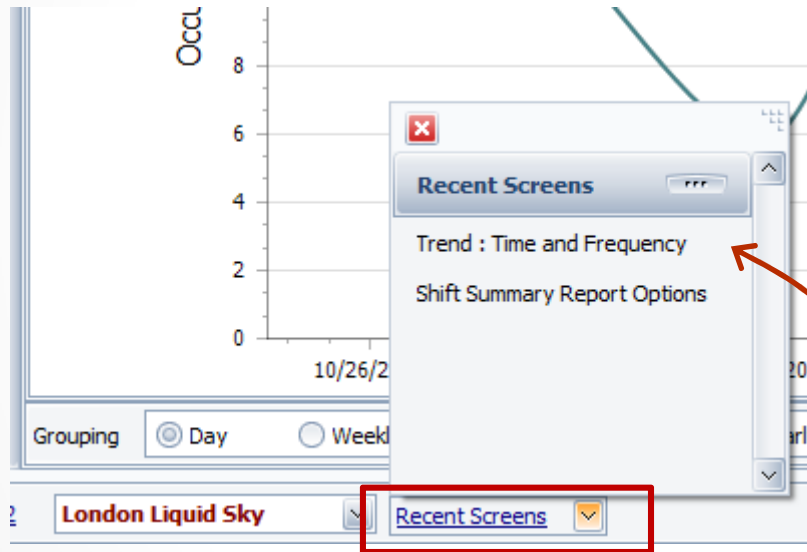
- OOE
 - OOE Trend
 - OOE Year To Date
 - OOE Shift (By Device)
 - OOE Part (By Device)
 - OOE Device
- Availability
 - Time & Frequency Loss**
- Performance
- Quality

Availability



Recent Screen Selector

Shows you all the screens you went to during the active session of OEE Studio. This will help you when you are switching between multiple screens to easily get to the last one you were on.



Just select the screen and it will automatically display where you last left it.

Availability – Tabular Analysis – Reason Count

Added Reason Count to this screen to provide additional ways to view your data. You can add Start and End Date to view when each event happened.

Duration (Sum)		Reason Count		Drop Column Fields Here	
Device	Loss Reason	State	Duration (Sum)	Reason Count	Grand Total
1004_VFL4	1600 Elevator	Down	03h 00m 23s	22	
	1600 Layer Former	Down	00h 15m 44s	3	
	1600 Pallet Dispenser	Down	00h 22m 02s	3	
	1600 Palletizer	Down	04h 53m 56s	4	
	1600 Slip Sheet Disp	Down	00h 14m 40s	2	
	1610 Hooder	Down	00h 13m 11s	2	
	1610 Stretch wrapper	Down	01h 34m 36s	13	
	1620 Utilities	Down	00h 23m 39s	3	
	1630 Compressor F...	Down	00h 22m 38s	1	
	1681 QA Issues	Down	00h 04m 14s	1	
	1683 Outfeed Con...	Down	00h 05m 17s	1	
1004_VFL4 Total			11h 30m 20s	55	

Reason Count		Date											Grand Total		
Device	Loss Reason	10/26/2015	10/27/2015	10/28/2015	10/29/2015	10/30/2015	10/31/2015	11/2/2015	11/3/2015	11/4/2015	11/5/2015	11/6/2015	11/7/2015	Grand Total	
1004_VFL1	1520 Bagger	4		12	13	3		7	1	2		11	6	5	64
1004_VFL2	1520 Bagger			1			1		2	3		3	5		15
1004_VFL3	1520 Bagger				1	1		1	4	4					11
1004_VFL4	1520 Bagger		3	1	6	11	2	5	7	1		7	2		45
1004_VFL5	1520 Bagger			2			1		1			1	1		6
Grand Total		4	3	16	20	16	3	13	15	10		22	14	5	141

You can also use this view to create a Paynter Chart. Detailed instructions for creating a Paynter Chart can be found at the link below:

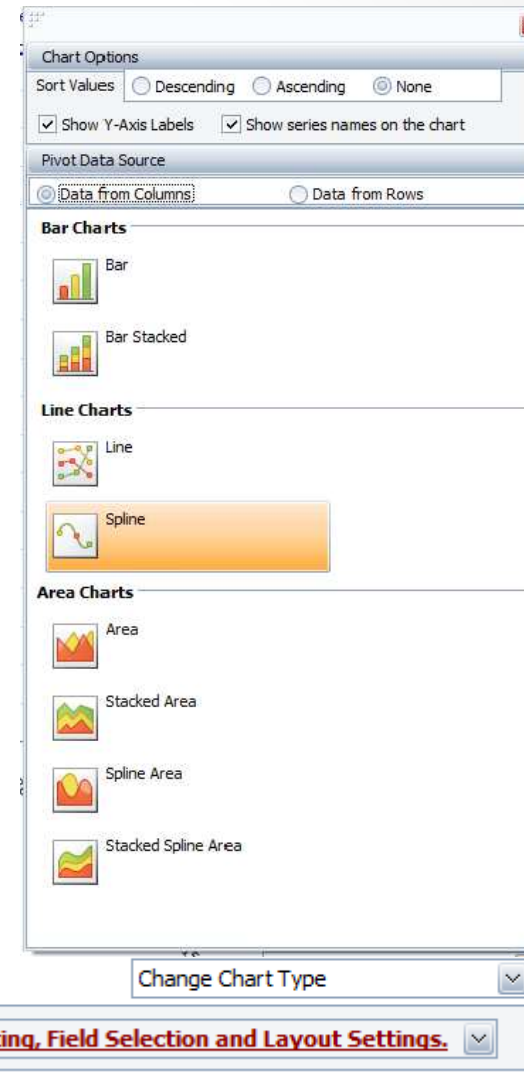
http://oeestudio.com/images/Availability/OEESstudio_PaynterChart.pdf

Charting Options

You can change the Chart Type within the following screen options:

- Availability – Loss Events – Shift
- Availability – Loss Events - Job
- Shift Data – Shift Analysis
- Job Data – Job Comparison

You will find the option on the bottom right of the chart on the screen.



Different Chart Types for Pivot Grids

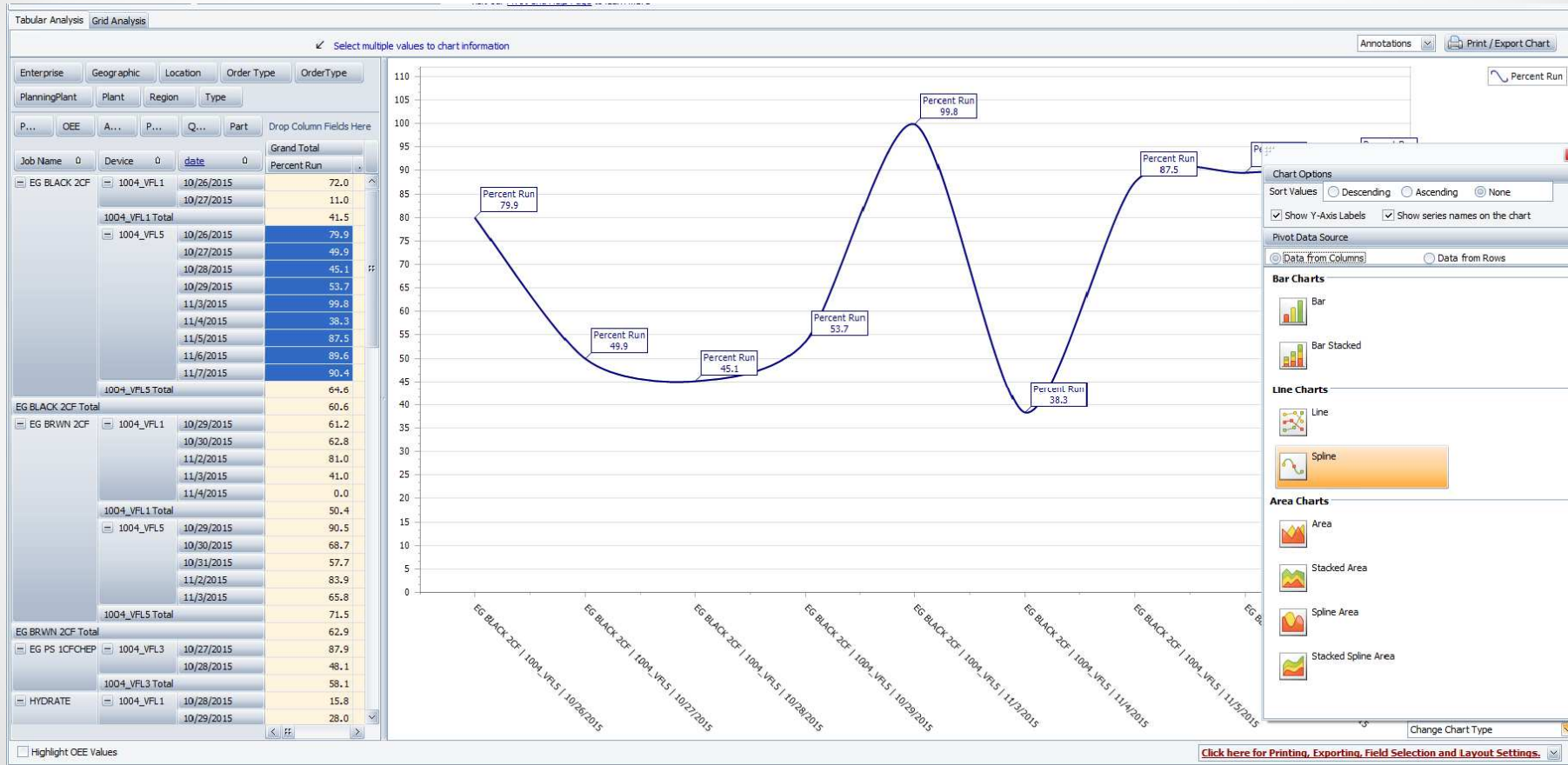


Chart Options

- Select None if you want to view the series as it appears in the Pivot Grid.

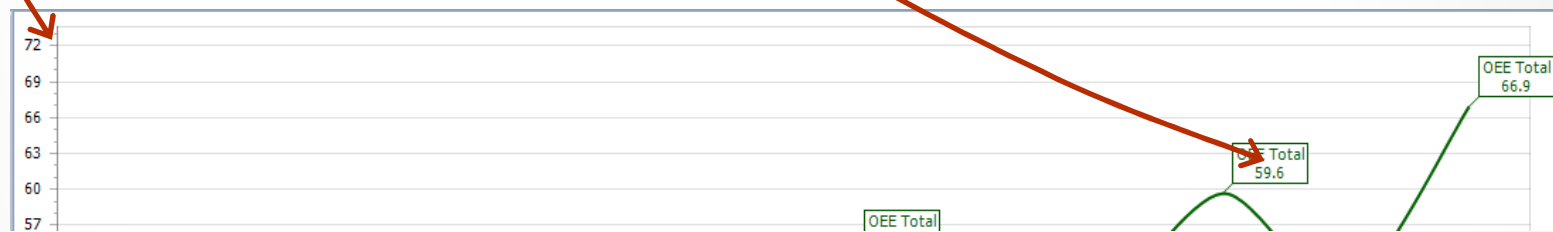
Chart Options

Sort Values Descending Ascending None

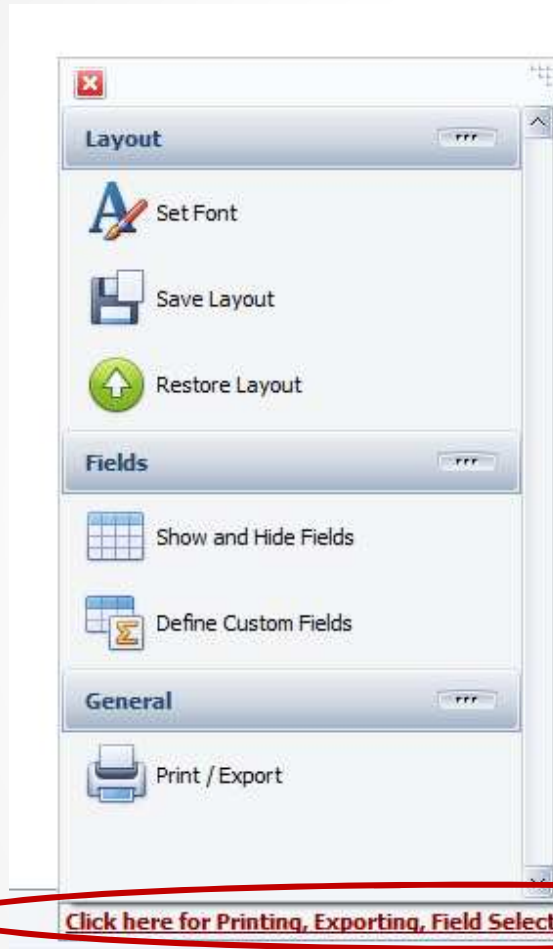
Show Y-Axis Labels Show series names on the chart

Pivot Data Source

Data from Columns Data from Rows



Pivot Grid – Extra Capabilities



Anytime you view a Pivot Grid, there are extra features and data elements available specific to that Grid.

- You have the ability to:
 - Set Font
 - Save Layout
 - Restore Layout
 - Show and Hide Fields
 - Define Custom Fields
 - Print/Export

Pivot Grid – Define Custom Fields - Help

New Custom Expression

Options

Field Description: CustomCalc Append Summary Type to the Field Description

Result Type: Boolean Integer Date and Time String Date Only Currency Decimal

Summary Type: Count Std Dev Sum Std Dev P Min Var Max Var P Average

The sum of the values. Hide Field

If the Field Description is "Cost" and the Summary Type is "Sum", the field will display as Cost (Sum) if this option is chosen. Otherwise it will simply display as "Cost".

Field Area

Data Area Row Area Column Area Filter Area

Enterprise		Location		Plant		Line			
Availability		OEE		Device 2		Device 3		Grand Total	
Area	Shift	Availability	OEE	Availability	OEE	Availability	OEE	Availability	OEE
Packaging	Shift 1	47.3	33.9	46.7	35.2	47.0	34.5		
	Shift 2	0.0	0.0	0.0	0.0	0.0	0.0		
	Shift 3	58.1	41.0	65.1	47.5	61.6	44.3		
	Shift 4	3.9	3.1	10.9	8.8	5.8	4.7		
Packaging Total		37.7	26.9	45.3	33.6	41.2	30.0		

Cancel Proceed to Expression Editor >>

- Click on the Field Area on the left to see where data elements are placed on the Grid.
- You can also click on the Pivot Grid Help Page link to go to our new online help website.

Apply / Refresh

Print / Export

Visit our [Pivot Grid Help Page](#) to learn more

Define Custom Fields – Custom Date Interval

Select Custom Date Interval – Max Summary Type and then select the Date Interval Type. Proceed to Expression Editor>>

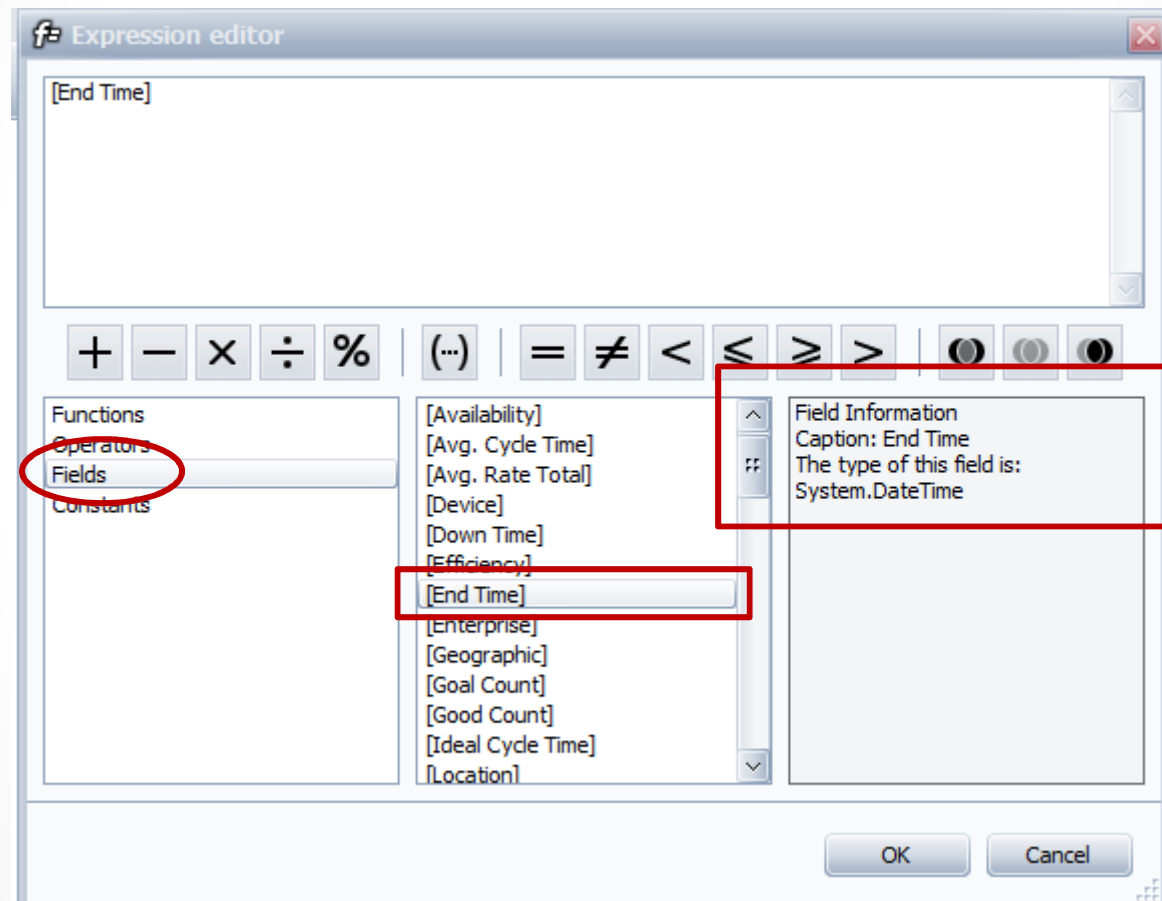
The screenshot shows the 'New Custom Expression' dialog box with the following configuration:

- Options:**
 - Field Description: Month
 - Result Type: Custom Date Interval (selected)
 - Summary Type: Max (selected)
 - Date Interval Type: Month
- Field Area:**
 - Enterprise: Availability, OEE
 - Table Data:

Area	Shift	Device 2	Device 3	Grand Total			
		Availability	OEE	Availability	OEE	Availability	OEE
Packaging	Shift 1	47.3	33.9	46.7	35.2	47.0	34.5
	Shift 2	0.0	0.0	0.0	0.0	0.0	0.0
	Shift 3	58.1	41.0	65.1	47.5	61.6	44.3
	Shift 4	3.9	3.1	10.9	8.8	5.8	4.7
Packaging Total		37.7	26.9	45.3	33.6	41.2	30.0

Define Custom Fields – Custom Date Interval

Select either the Start Time or End Time for the Date Interval.



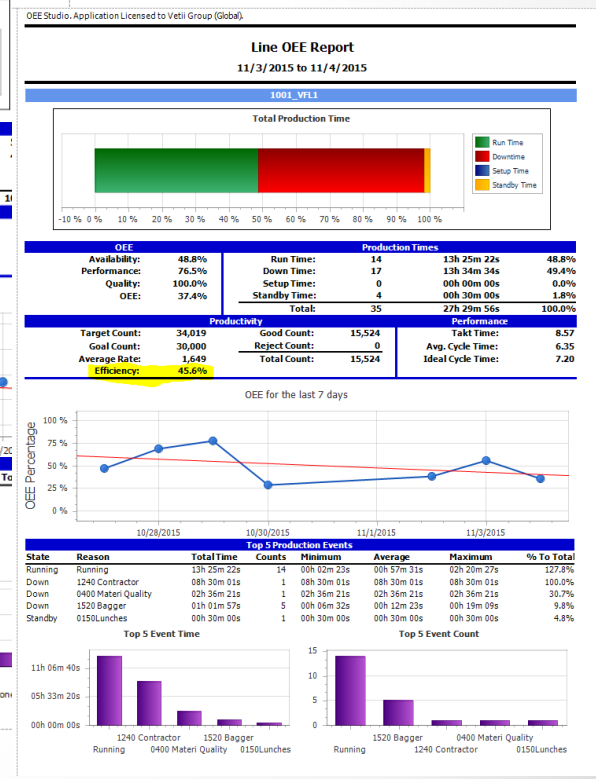
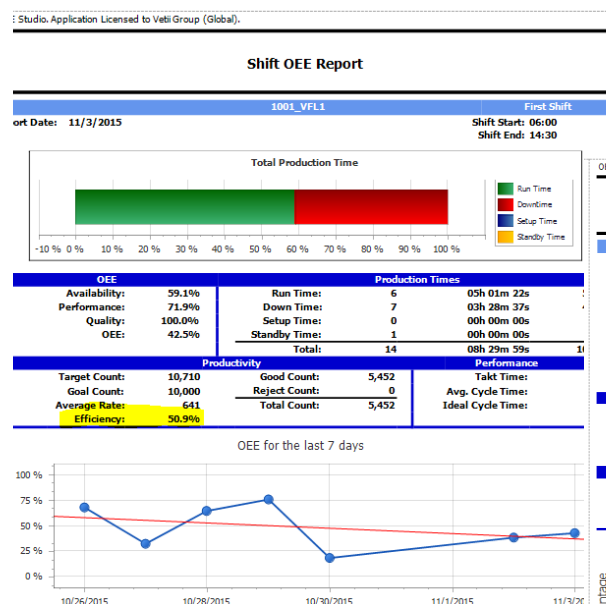
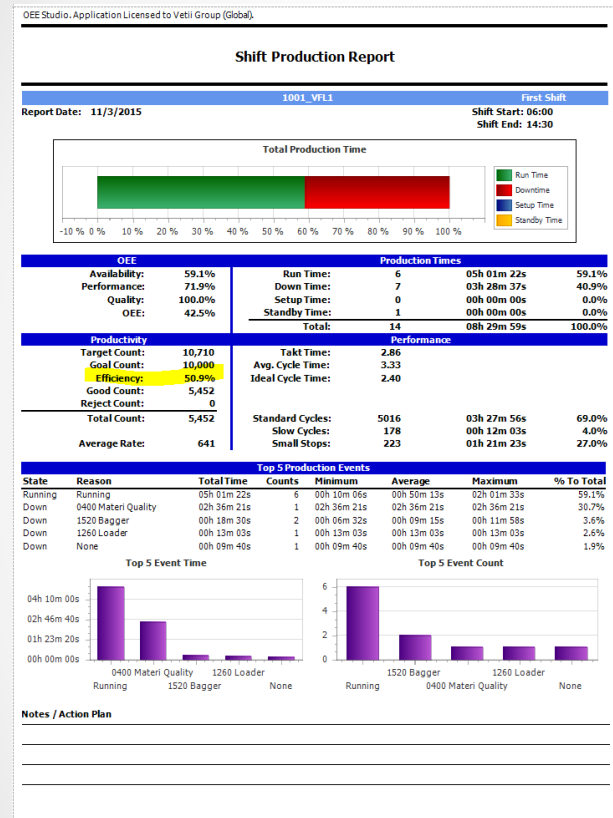
Custom Date Interval - Hierarchy

Below is an example of the date hierarchy for the pivot grid.

Location	Q1 2015			Q1 2015 Total	Q2 2015			Q2 2015 Total	Q3 2015			Q3 2015 Total	Q4 2015			Q4 2015 Total	2015 Total
	January	February	March		April	May	June		July	August	September		October	November	December		
Avondale, PA	42.5	35.4	38.0	38.5	39.7	44.1	38.3	40.7	5.8	14.8	24.3	13.5	28.0	39.6	33.6	33.4	33.2
Carrollton, KY		30.4	45.4	41.6	51.4	54.3	43.0	49.9	24.8	28.4	26.9	26.7	31.0	28.5	44.3	34.5	38.3
Channahon, IL		36.0	58.0	45.6	69.2	53.5	33.0	54.3			43.4	43.4	55.9	45.8	43.5	47.9	47.4
Germantown, WI		41.8	35.8	38.0	56.6	59.7	27.8	56.5	50.2		46.8	47.3	33.0	31.9	33.0	32.5	38.9
Imlay City, MI		17.7	43.9	33.6	54.0	55.7	42.3	52.3		33.2	35.7	34.5	31.6	27.4	31.3	30.0	36.0
Lebanon, CT	46.9	36.8	42.2	41.7	47.2	49.3	43.7	46.9	25.4	24.6	34.7	28.9	46.5	46.1	37.6	44.0	40.7
Orrville, OH	24.3	24.6	30.8	27.7	44.2	51.4	36.9	44.3	19.2	16.9	33.9	23.6	37.1	39.6	44.5	39.8	34.6
Oxford, PA	21.4	24.3	27.9	24.8	36.6	50.7	32.4	40.4	20.4	28.9	29.1	26.1	37.2	41.1	22.3	33.8	31.5
Shreve, OH	28.2	31.2	42.5	34.2	50.1	53.4	46.5	50.3	38.4	63.2	62.9	51.6	66.9	56.7	43.4	54.3	48.6
Wright City, MO		53.4	57.8	56.4	75.5	57.6	47.0	62.0	28.0	49.8	27.0	38.2	51.1	41.1	39.8	43.4	48.3
Yaphank, NY					52.8	26.9	27.0	28.9	21.4	15.0	0.0	12.7	19.1	23.2	26.1	23.7	22.2
Grand Total	35.4	31.9	39.6	36.2	47.3	48.9	38.7	45.2	22.6	27.0	31.1	27.0	39.4	37.2	35.4	37.3	37.1

Efficiency added to Standard Reports

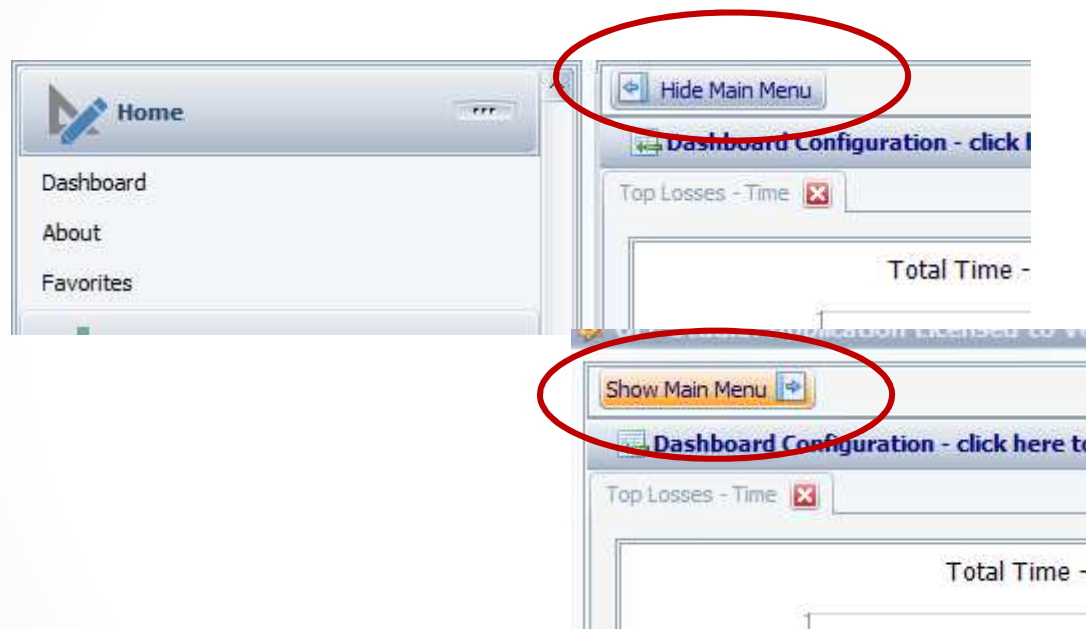
Efficiency has been added to the Shift Production, Shift OEE And Line OEE Reports.



Hide or Show Menu Options

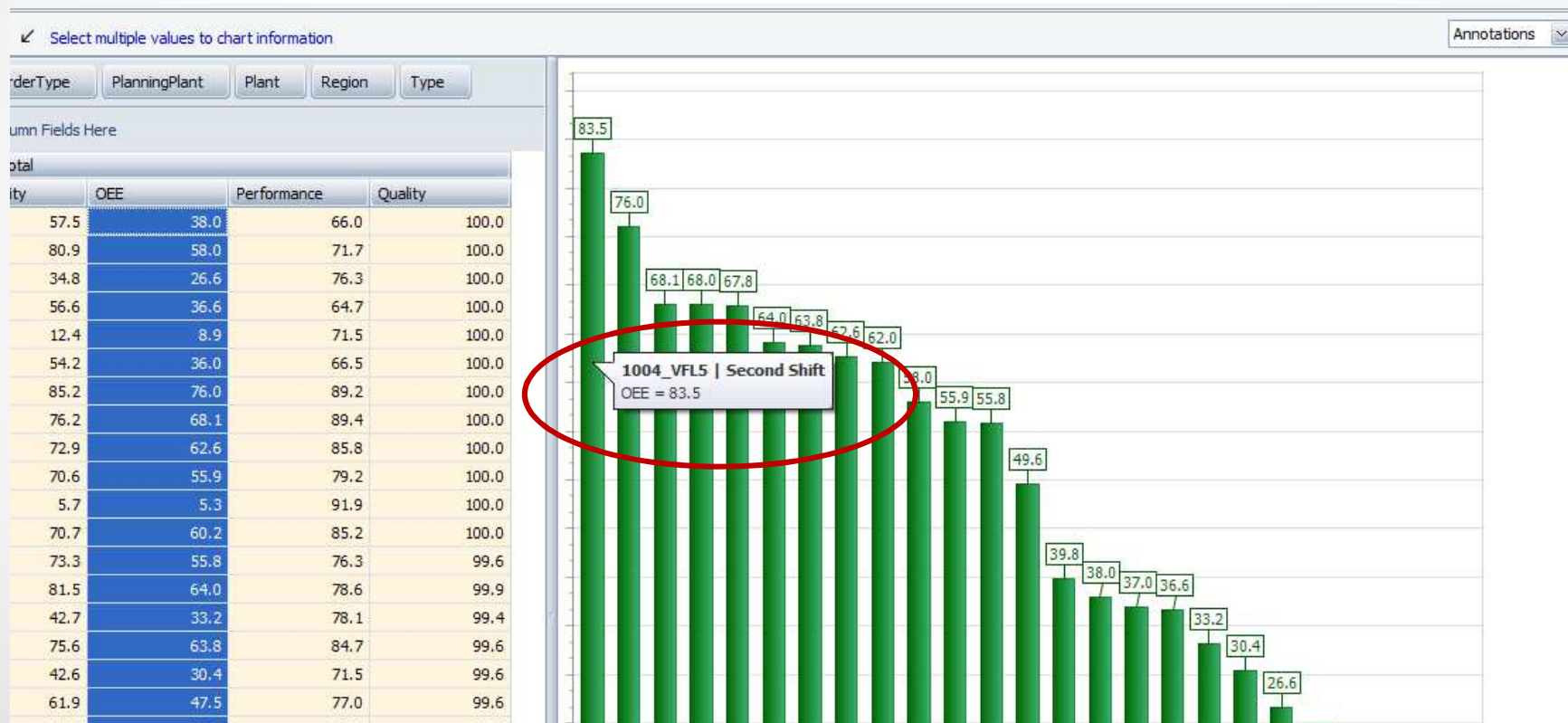
In order to view the reports or charts in full screen mode, you can select to **Hide the Main Menu**.

Show Main Menu will display the menu options on the left side of the screen.



Shift Data / Job Data

You can hover over each bar in the charts to view the details of that bar. This is helpful if your computer monitor doesn't display all of the chart.



Shift Data / Job Data – Define Field Type for User String or User Number

You can define what type of data element a User String or User Number can be. For example, you might want to get the average head count for a given date range. This assumes that you are storing this value in User Number 11 in the Vorne XL device for the Jobs.

Click on the column heading in the Data Area and select the Summary Type for the field.

As you can see in this example the Actual Head Count will display the Average Total

The image shows two screenshots from a software interface. The left screenshot is the 'PivotGrid Field List' dialog box. It has a 'Data Area' section where 'Actual Head Count' is selected and circled in red. The right screenshot is a PivotTable. The column heading 'Actual Head Count' is circled in red. A dropdown menu is open over this heading, showing various summary functions. The 'Average' function is selected and also circled in red. The PivotTable data is as follows:

Enterprise	Area	Location	Plant
Drop Column Fields Here			
Grand Total			
Actual Head Count	Part		
Count		10	5
Sum	96020		
Min	96081	6	6
Max	96082	4	3
Average	96206	12	2
StdDev	96207	13	2
StdDevp	96208	13	1
Var	96223	4	3
Varp	96262	12	3
Custom	96294	8	9
	96345	4	9
	1096375	9	4
	1096386	14	1
	1096533	8	3
	1096540	8	3
ALB1-Line01 Total		8	54
ALB1-Line02			
	1095943	0	1
	1096116	6	2
	1096117	6	2

Example of Sum and Average values

Enterprise Area Location Plant					
Actual Head Count					
Device	Job Name	Part	Start Time	End Time	Actual Head Cou...
- ALB1-Line01	- 1096262	- 509078	- 6/4/2015 9:17:35 PM	6/4/2015 10:59:59 PM	12
			- 6/4/2015 10:59:59 PM	6/5/2015 6:59:59 AM	12
			- 6/5/2015 6:59:59 AM	6/5/2015 2:59:59 PM	13
509078 Total					37

Enterprise Area Location Plant					
Actual Head Count					
Count	Job Name	Part	Start Time	End Time	Actual Head Cou...
Sum	1096262	- 509078	- 6/4/2015 9:17:35 PM	6/4/2015 10:59:59 PM	12
Min			- 6/4/2015 10:59:59 PM	6/5/2015 6:59:59 AM	12
Max			- 6/5/2015 6:59:59 AM	6/5/2015 2:59:59 PM	13
<input checked="" type="checkbox"/> Average	509078 Total				12
StdDev					
StdDevp					
Var					
Varp					
Custom					

Shift Data / Job Data – Count the number of times a part was produced

You can move Part or Job Name to the Data Area and it will automatically count the number of times it was run within the selected date range.

Enterprise Area Location Plant

Good Count Drop Column Fields Here

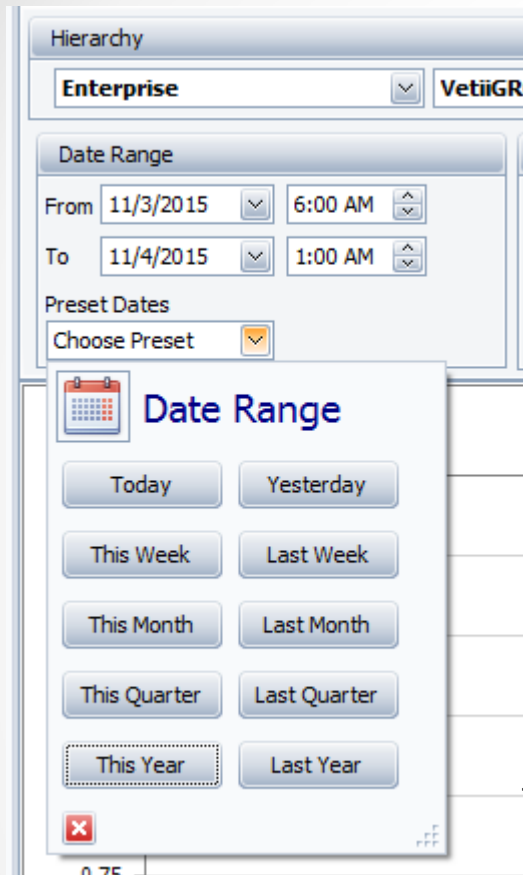
Device	Job Name	Part	Start Time	End Time	Good Count Total	
ALB1-Line01	1096020	509074	6/1/2015 7:03:47 AM	6/1/2015 2:59:59 PM	37,152	
			6/1/2015 2:59:59 PM	6/1/2015 3:56:25 PM	8,064	
			6/1/2015 3:56:25 PM	6/1/2015 10:59:59 PM	66,880	
			6/1/2015 10:59:59 PM	6/2/2015 6:59:59 AM	106,592	
			6/2/2015 6:59:59 AM	6/2/2015 2:01:58 PM	46,400	
	509074 Total					265,088
	1096081	509075	6/2/2015 2:01:58 PM	6/2/2015 2:59:59 PM	12,416	
			6/2/2015 2:59:59 PM	6/2/2015 3:28:19 PM	6,688	
			6/2/2015 3:28:19 PM	6/2/2015 10:59:59 PM	88,576	
			6/2/2015 10:59:59 PM	6/2/2015 11:07:00 PM	1,792	
6/2/2015 11:07:25 PM			6/3/2015 6:59:59 AM	108,064		

Device	Job Name	Start Time	End Time	Grand Total	
				Good Count	Part
ALB1-Line01	1096020	6/1/2015 7:03:47 AM	6/1/2015 2:59:59 PM	37,152	1
		6/1/2015 2:59:59 PM	6/1/2015 3:56:25 PM	8,064	1
		6/1/2015 3:56:25 PM	6/1/2015 10:59:59 PM	66,880	1
		6/1/2015 10:59:59 PM	6/2/2015 6:59:59 AM	106,592	1
		6/2/2015 6:59:59 AM	6/2/2015 2:01:58 PM	46,400	1
		1096020 Total			
1096081	6/2/2015 2:01:58 PM	6/2/2015 2:59:59 PM	12,416	1	

Good Count Part Drop Column Fields Here

Device	Job Name	Grand Total	
		Good Count	Part
ALB1-Line01	1096020	265,088	5
	1096081	259,712	6
	1096082	93,632	3
	1096206	63,424	2
	1096207	65,088	2
	1096208	65,344	1
	1096223	66,752	3
	1096262	192,736	3
	1096294	261,696	9
	1096345	119,904	9
	1096375	129,600	4
	1096386	9,696	1
1096533	74,336	3	
1096540	169,696	3	
ALB1-Line01 Total		1,836,704	54

Preset Dates



Preset Dates provides a quick and easy way to set the **calendar** Date Range.

Please keep in mind that the Date Range is calendar based. If you want to view shift related data, then you need to change the From and To TIME to be in synch with your Shift start and end times.

<< Added This Year and Last Year to the Preset Dates selection.

OEE Studio v 3.1

In order to support the new Vorne v1.3.x firmware, you must upgrade to the latest

XL Bolt-on Data Collector version 1.8.4

<http://www.sulzerconsulting.com/downloads/vorne/XL Bolt-On Data Collector.zip>

Version 3.1 of OEE Studio supports all versions of Vorne XL device firmware.

Smart Installation

<http://oeestudio.com/installs/release/v3/setup/InstallOEEStudio.exe>

If you have questions or need assistance, please contact either

Debbie Olk (OEE Studio, OEE Alert or custom reports)

Debbie.olk@debtechsystems.com

or

Jim Sulzer (XL Bolt-On Data Collector).

jim@sulzerconsulting.com

OEE Studio v3.1

OEE Studio version 3.1 is available for upgrade.

If you have an older version that was manually installed, please uninstall that version of OEE Audit before installing this version of OEE Studio. This can be determined by looking at the bottom right of the OEE Audit software.



Smart Installation

<http://oestudio.com/installs/release/v3/setup/InstallOEEStudio.exe>

- The OEE Studio installation manual is available for downloading on our new website – <http://www.oestudio.com/toolbox.html>

Contact Us

- As the Vorne Authorized Reporting Consultants, we provide customized reporting solutions, including working with data from your ERP/MRP systems.
- In addition to customized reporting, we provide support and customization for the **OEE Studio** reporting software (designed specifically for the data captured from the Vorne XL devices).
- We also provide sales, support and customization for OEE Alert. (www.OEEAlert.com)

OEE Studio, OEE Alert and XL Bolt-On Data Collector are part of the Marketing brand of

Vetii | GROUP